

# Schools

## WiFi Radiation Research

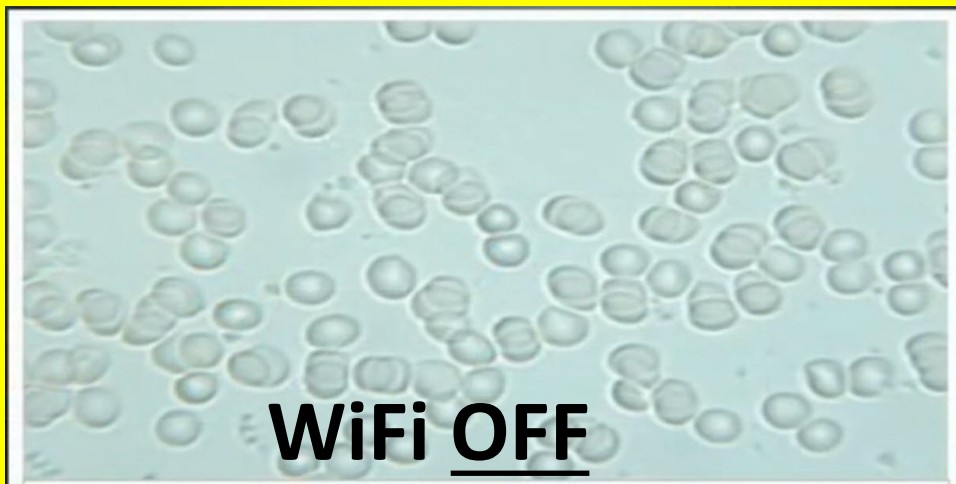
[www.WiFiFacts.com](http://www.WiFiFacts.com)



# Red Blood Cell Damage

1. **Red** blood cell damage after only **70 minutes** using a computer with **WiFi** turned **ON**.

Fairly Healthy Blood Cells



Very Unhealthy Blood Cells



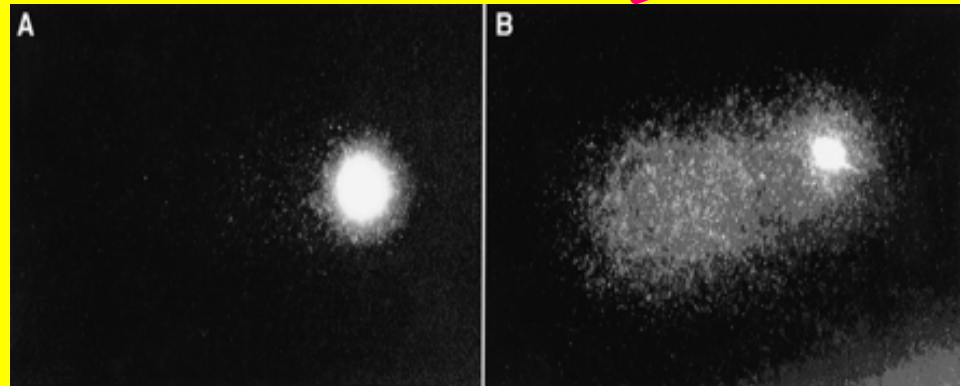
Slides by Dr. Magda Havas, Trent University, Ontario, Canada

# Sperm DNA Damage

2. **Permanent** damage to the **DNA** in girls' eggs, likely.
3. **DNA** damage (**fragmentation**) to male sperm & reduced movement from microwave radiation, such as WiFi.



(Slide from Dr. Magda Havas, Trent University, Canada)



Normal sperm DNA.

Fragmented sperm DNA

(Biology of Reproduction, November 1, Vol. 59)

4. Go to [www.WiFiFacts.com](http://www.WiFiFacts.com) for latest research.

## Microwave radiation from sources such as WiFi may be harmful to your child's health.

- Sperm DNA damage (fragmentation)
- Permanent female egg DNA damage, likely
- Memory problems and brain “fog”
- Headaches and rapid heart rate
- Sleep disturbances
- Blood cell damage

(The above are supported by research, clinical cases, and experts' opinions.)